

YellowScan Mapper+

**Small & compact.
Mighty & powerful.**

Advanced performance fitted into a compact survey solution.

The YellowScan Mapper+ is an efficient 3 echoes, high-density LiDAR system for all mapping applications.



Technologies inside

applanix

LIVOX



Key differentiators

- ▶ High point density
- ▶ Lightweight
- ▶ 80 m typ. flight height



Integrations

- ▶ Single-rotor UAV
- ▶ Multi-rotor UAV
- ▶ VTOL UAV

Technical specifications.

Laser scanner	Livox AVIA
GNSS inertial solution	Applanix APX-15 UAV
Precision ⁽¹⁾⁽³⁾	3.5 cm
Accuracy ⁽¹⁾⁽³⁾	4 cm
Typ. flight speed	10 m/s
Typ. flight height	80 m
Max. rec. flight height	100 m
Point density	170 pts/sqm @ 100m AGL 10 m/s
Laser range	Up to 230 m
Laser wavelength	905 nm
Scanner field-of-view	70.4° x 4.5°

(1) Precision, also called reproducibility or repeatability, accounts for the variation in successive measurements taken on the same target.
(2) Accuracy is the degree of conformity of a measured position to its actual (true) value.

Max. data generated ⁽⁴⁾	720 000 points/sec
Echoes per shot	Up to 3
Shots per second	Up to 240 000
Scanning frequency	Up to 10 Hz
RGB camera	Optional
Weight	1.1 kg (2.4 lbs) batt. excl.
Size	L 150 x W 104 x H 132 mm
Battery autonomy	1 hour typ.
Power consumption	35 W
Operating temperature	-10 to +40 °C

(3) 1σ @ 50 m, nadir.
(4) Theoretical maximum of points with all shots yielding the maximum number of echoes. May vary depending on flight and survey conditions, and surveyed environment.

Package includes.


✓ Hardware :

- ▶ YellowScan Mapper+
- ▶ Quick release mounting mechanism (DJI skyport or Gremsy)
- ▶ 2 batteries
- ▶ UAV GNSS antenna and cable
- ▶ 2 USB flash drives
- ▶ Rugged backpack

✓ Services :



- ▶ 1-year warranty & unlimited technical support
- ▶ In-person or online training
- ▶ Boresight calibration certificate

✓ Software :

- ▶ Applanix POSPac to post-process GNSS and inertial data for highest accuracy
- ▶ **CloudStation Essential** 
Visualize, inspect, colorize from orthophotos, and export your data.

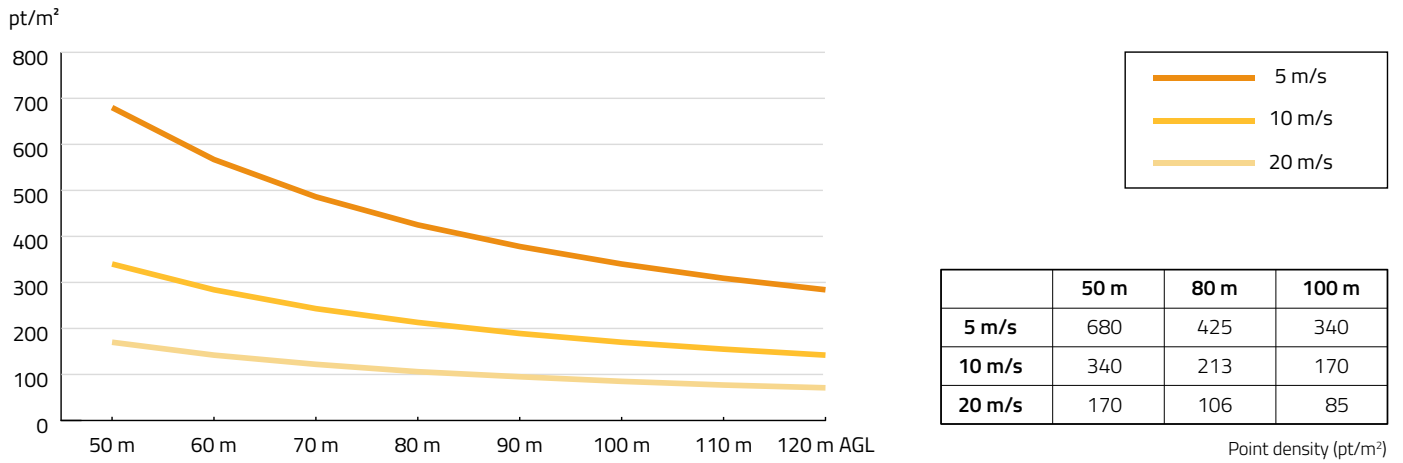
+ Optional accessories and enhancements :

- ▶ Stand-alone mounting bracket for DJI M600/300
- ▶ DJI Skyport to Gremsy or Gremsy to DJI Skyport adapters
- ▶ YellowScan LiveStation: the real-time in-flight LiDAR monitoring kit (includes software & 2 radio-modems)
- ▶ Warranty and technical support extensions
- ▶ Single- or Dual-camera modules (RGB)

- ▶ **CloudStation Pro** 
Visualize, inspect, refine your data quality, enrich your data with classification and color, and unlock more export features.
- ▶ **CloudStation Ultimate** 
Zero compromise, all features activated. Includes Orthophoto generation and Command Line (ytk) processing for automation & batching.

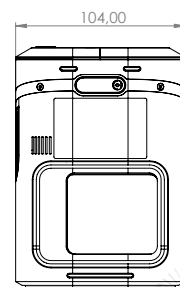
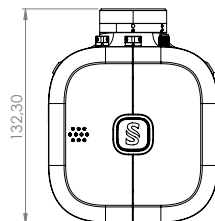
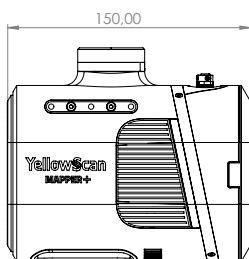


Typical mission parameters.



Dimensional drawings.

ⓘ Dimensions expressed in millimeters

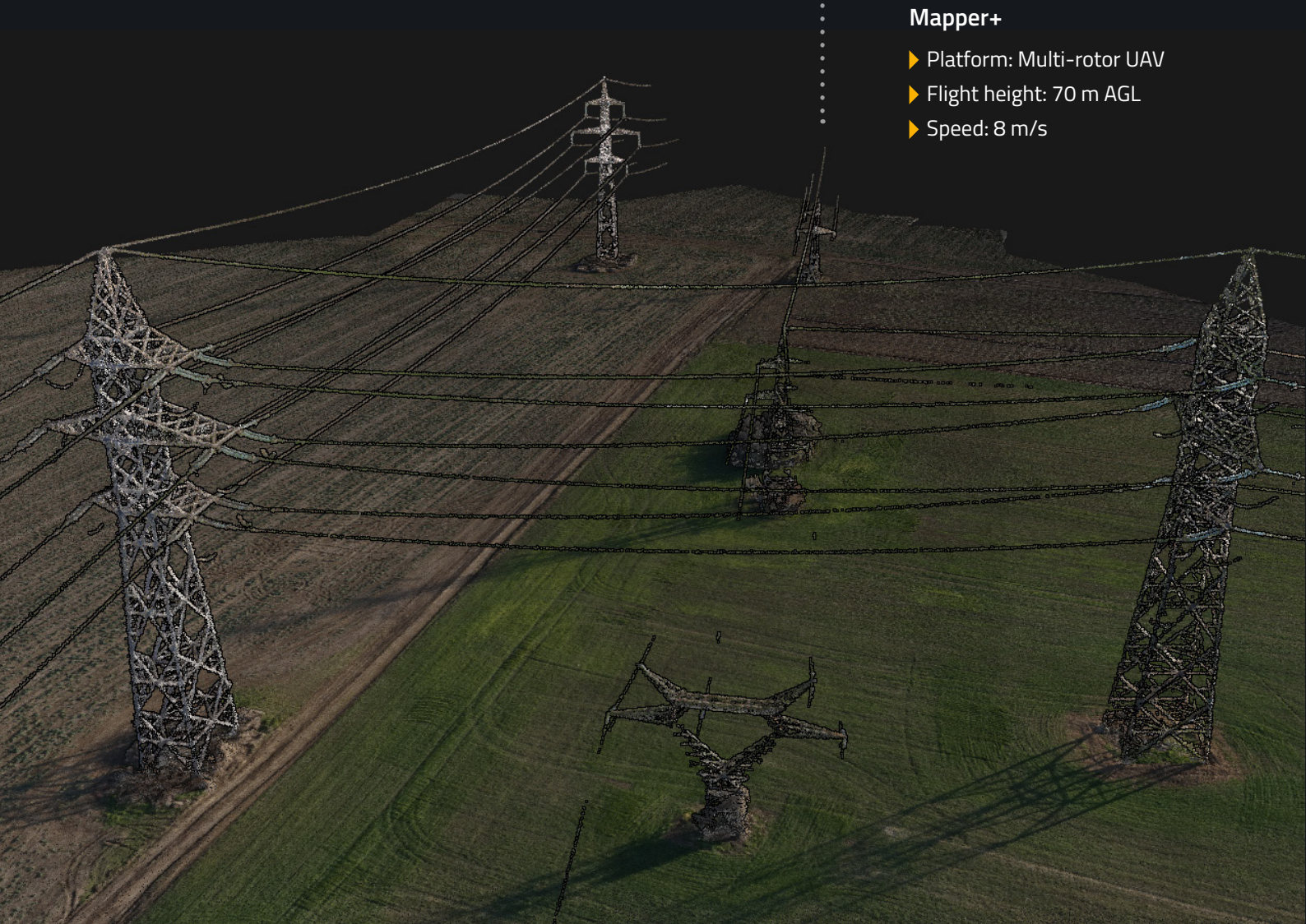


Typical point cloud snapshots.



Mapper+

- ▶ Platform: Multi-rotor UAV
- ▶ Flight height: 80 m AGL
- ▶ Speed: 8 m/s



Mapper+

- ▶ Platform: Multi-rotor UAV
- ▶ Flight height: 70 m AGL
- ▶ Speed: 8 m/s